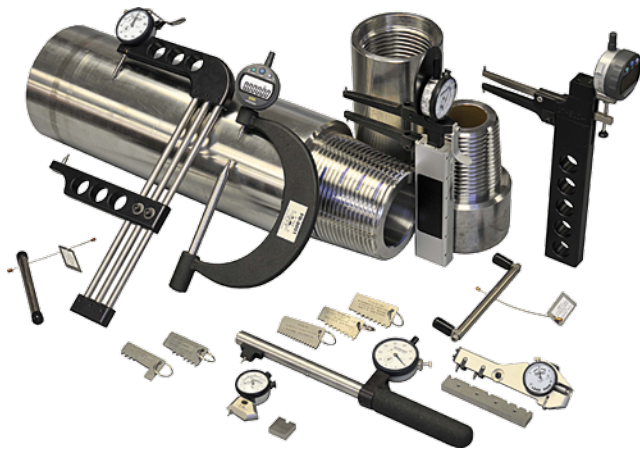
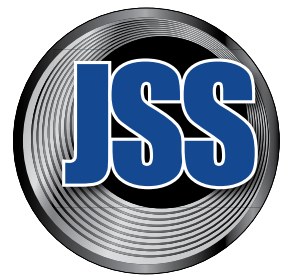


Rotary Shouldered Connections



Gagemaker's **JSS for Rotary Shouldered Connections** is the only system available that measures and qualifies both new and used pipe. It's now possible to avoid broken connections by identifying thread damage before it's visually apparent and unfortunately too late. From inspecting just a few key points, you will save hours of down time and thousands of dollars in rework charges.



Tubing and Casing Connections

Gagemaker's **JSS for Tubing & Casing Connections** takes the guesswork out of inspecting tubing and casing. The Gagemaker's Tubing and Casing Thread Inspection Gages inspect all required thread elements - Thread Form, Ovality, Crest Diameter, Thread Lead, Thread Height, and Thread Taper – all with the precise accuracy required in today's demanding industry.



Gagemaker LP, • P.O. Box 87709, Houston, Texas 77287-7709
712 East Southmore Ave., Pasadena, Texas 77502
Phone: 713-472-7360 • Fax: 713-472-7241
Email: gagemaker@gagemaker.com

© 2013 Gagemaker, LP

TDWIN TAPER Thread Inspection Data Software



Source the most reliable information...

Machine the highest quality threads...

Inspect with greater accuracy...

Document all your inspections...



Rotary Shouldered and Tubing & Casing Connection Software

TDWIN Taper provides easy access to information for both preferred and non-preferred Rotary Shouldered Connections, Tubing and Casing Connections, and any combination of Crossover. The program displays connection drawings, inspection gage information, and setup and inspection reports for standard connection types and sizes.

The software displays printable drawings suitable for manufacturing that follow ASME Y14.5 standards for industry compatibility. Print gage setup and inspection reports with your company logo and work order information. The program also offers the choice to save reports and jobs for future reference.

Includes Connection Data for:

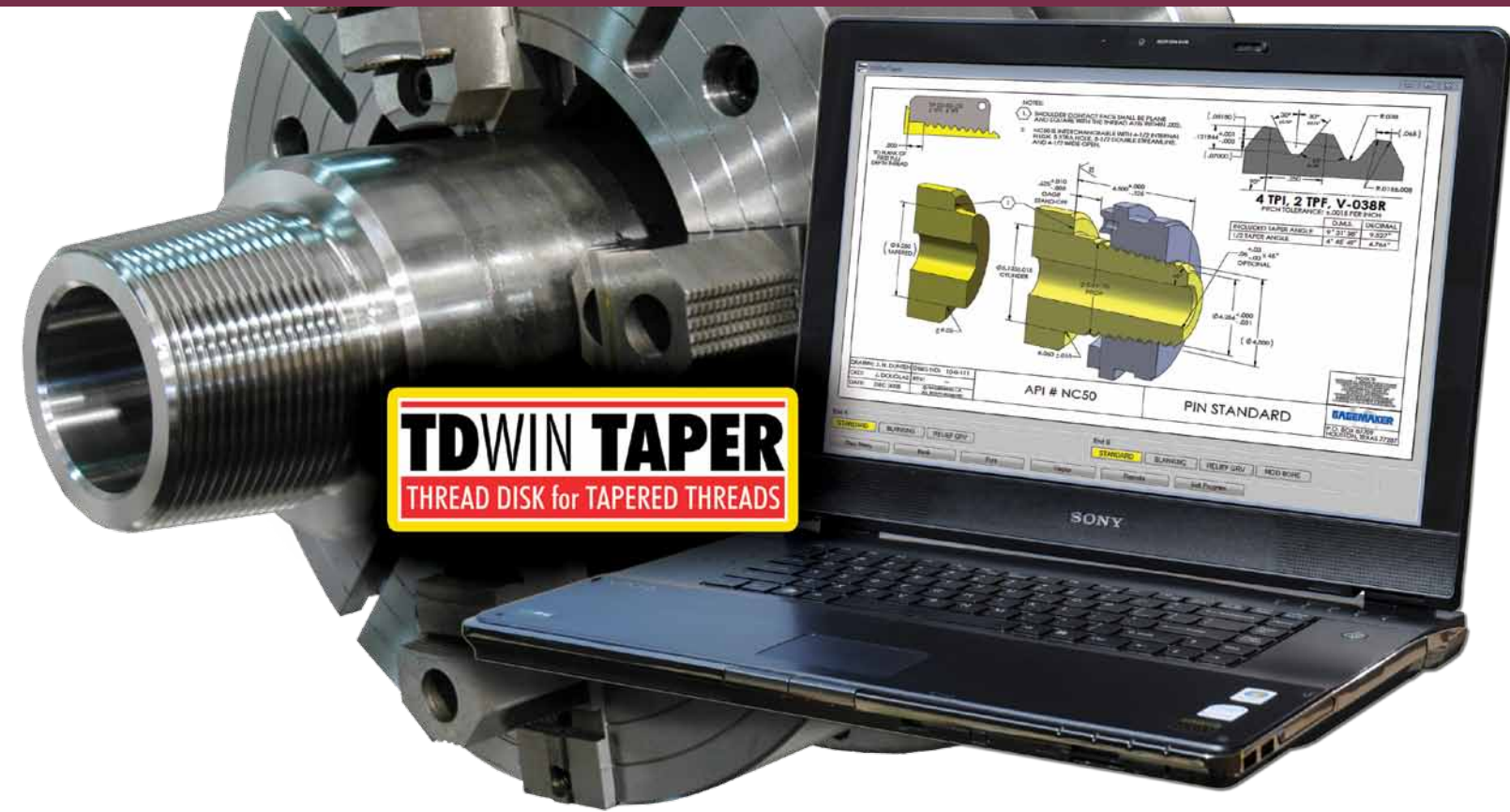
Rotary Shouldered Connections

- ACME Regular
- ACME Streamline
- API No. Connections
- API Regular
- Double Streamline
- eXtra Hole
- External Flush
- Internal Flush
- Full Hole
- Hughes H-90
- Slimline H90
- Open Hole
- PAC
- Slim Hole
- Wide Open

Tubing and Casing Connections

- NUE Tubing
- EUE Tubing
- Short Thread Casing
- Long Thread Casing
- Buttress Casing
- USS Improved Buttress Tubing
- Line Pipe
- Special Clearance Coupling
- SR13 Seal Ring Groove Couplings

Gagemaker's TDWIN Taper software program produces dimensional drawings and inspection data for API downhole tubular connectors based on the most current industry standards. Everything you need to machine, inspect, and document tubular connection threads is available in this convenient software program.



TDWIN Taper's Features:

- Follows API Specification 7.2, Dec. 2008, for Rotary Shouldered Connections
- Follows API Specification 5B, Oct. 2008, for Tubing and Casing Connections
- Presents "preferred" connections as well as interchangeable and obsolete connections
- Organizes data compatible with API and industry knowledge offered by resources such as Smith, Joy, and Hughes
- Displays Gagemaker style thread gages and gage setting information
- Produces gage setup reports for tubing, casing, RSC, and crossover combinations
- Configures and prints reference drawings for manufacturing including; standard pin/box/coupling, pin/box blanking, pin/box relief groove, box modified bore-back relief, special clearance couplings, and SR grooved couplings
- Provides inspection reports for all connection configurations selected
- Customizes reports with your company logo
- Saves reports to job files to recall for future reference
- Provides web links to locate and purchase necessary gages and standards

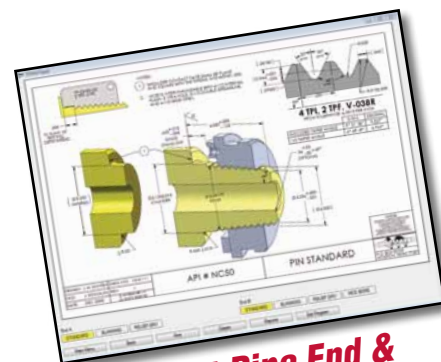
In 6 Easy Steps



Select Connection Type



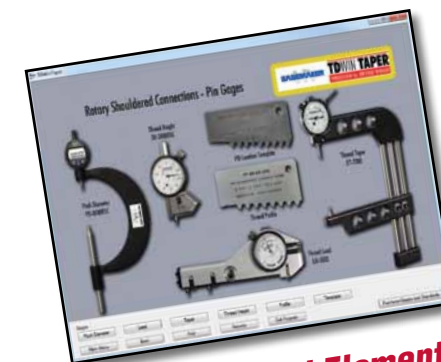
Pick Size & View Drawing



Select Pipe End & Review Drawing



Choose Gage Type



Choose Thread Element



Review & Print Inspection Report